



GAT MONTHLY MEMBERSHIP PROGRESS REPORT

Results as of: 6/30/2023

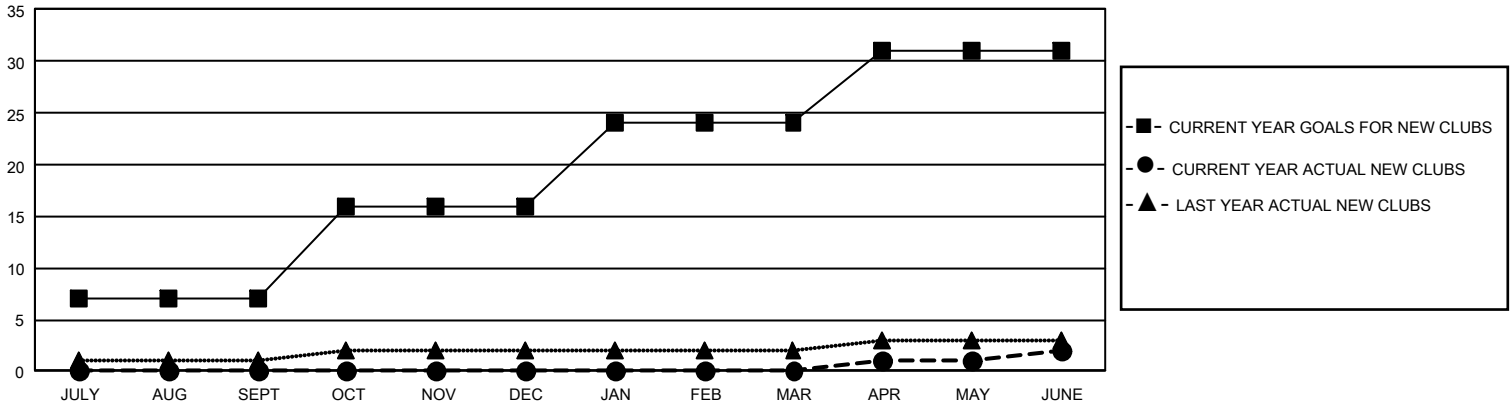
GMT Constitutional Area 1, Group J

REPORT DOES NOT INCLUDE CLUBS IN UNDISTRICTED AREAS.

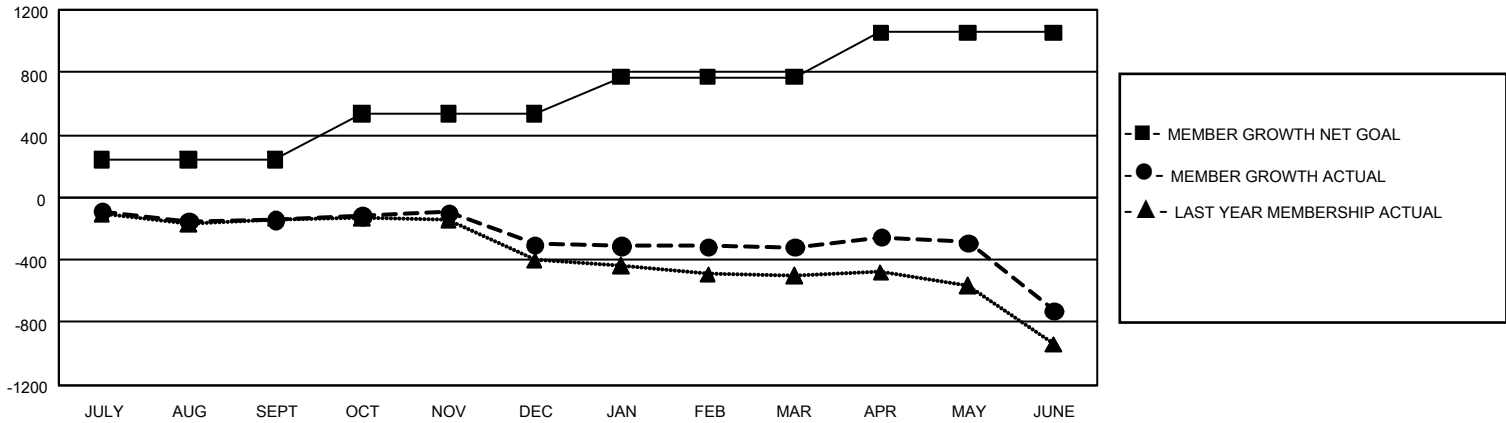
Clubs			
RESULTS FOR 2022-2023			
QUARTER	NEW CLUB GOAL	NEW CLUBS	DROPPED CLUBS
JULY/AUG/SEPT	21	0	5
OCT/NOV/DEC	27	0	4
JAN/FEB/MAR	24	0	7
APR/MAY/JUNE	21	2	15

Members			
RESULTS FOR 2022-2023			
QUARTER	MEMBER GROWTH NET GOAL	MEMBER GROWTH ACTUAL	DROPPED MEMBERS ACTUAL (including transfers)
JULY/AUG/SEPT	241	420	522
OCT/NOV/DEC	297	479	597
JAN/FEB/MAR	231	531	492
APR/MAY/JUNE	287	568	931

GOALS AND ACTUAL NEW CLUBS CUMULATIVE



GOALS AND ACTUAL MEMBERS CUMULATIVE



DROPPED CLUBS: 31	499 CLUBS OF 898 ADDED 1 OR MORE NEW MEMBERS	<u>GENDER DISTRIBUTION</u>	
		MALE	13,890 (69.41%)
<u>DROPPED MEMBERS</u>		FEMALE	6,120 (30.58%)
DECEASED	342	NON BINARY	1 (0.00%)
CLUB CANCELLED	112	PREFER NOT TO ANSWER	1 (0.00%)
OTHER	2,087	TOTAL FAMILY UNIT MEMBERS	3,864
TOTAL	2,541	FAMILY MEMBERS PAYING HALF DUES	1,972

[CLICK HERE FOR CUMULATIVE MEMBERSHIP DATA](#)